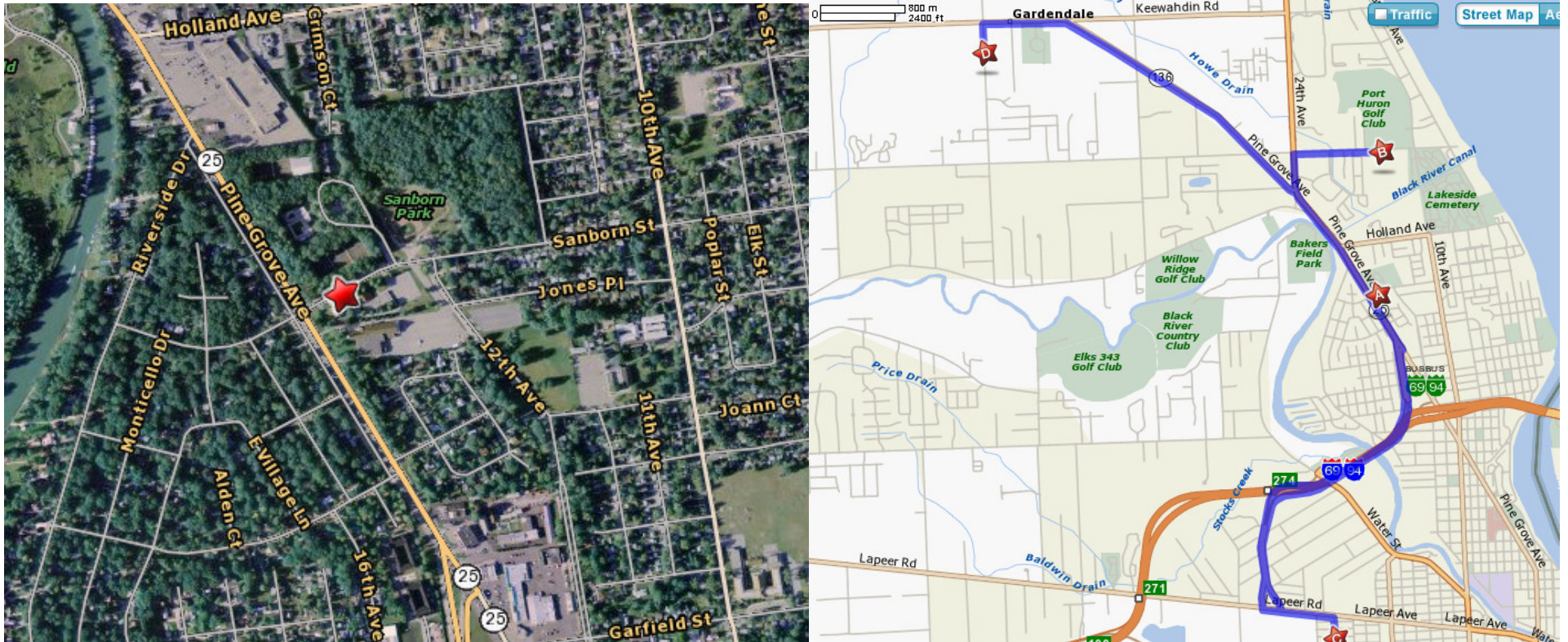


Field: Sanborn Park

(East of) Sanborn Pool – 1919 Sanborn Street, Port Huron, MI 48060



To: Port Huron Northern – 1.8 Estimated Miles - Estimated Time: 4 minutes

[1] Start out going SOUTHWEST on SANBORN ST toward MI-25/PINE GROVE AVE. (.1 Mile) [2] Turn RIGHT onto MI-25/PINE GROVE AVE. Continue to follow MI-25. (1.2 Miles) [3] Turn RIGHT onto KRAFFT RD (.3 Miles) [4] 1799 KRAFFT RD is on the RIGHT

To: Port Huron High School – 3.47 Estimated Miles - Estimated Time: 6 minutes

[1] Start out going SOUTHWEST on SANBORN ST toward MI-25/PINE GROVE AVE (.1 Mile) [2] Turn LEFT onto MI-25/PINE GROVE AVE (.3 Miles) [3] Take the I-69 W/I-94 W ramp (.4 Miles) [4] Merge onto I-69 W/I-94 W (.6 Miles) [5] Take the WATER ST exit, EXIT 274, toward LAPEER AVE (.1 Miles) [6] Take the LAPEER AVE ramp. (.4 Miles) [7] Turn SLIGHT LEFT to take the LAPEER AVE ramp (.9 Miles) [8] Turn LEFT onto LAPEER RD (.4 Miles) [9] LAPEER RD becomes LAPEER AVE - Turn RIGHT onto 24TH ST (.2 Miles) [10] Turn LEFT onto Farley Street (.1 Mile)

To: Fort Gratiot – 3.65 Estimated Miles - Estimated Time: 6 minutes

[1] Start out going SOUTHWEST on SANBORN ST toward MI-25/PINE GROVE AVE (.1 Mile) [2] Turn RIGHT onto MI-25/PINE GROVE AVE (.9 Miles) [3] Turn LEFT onto PINE GROVE AVE/MI-136. Continue to follow MI-136 (2.5 Miles) [4] Turn LEFT onto STATE RD (.2 Miles) [5] 4392 STATE RD is on the LEFT