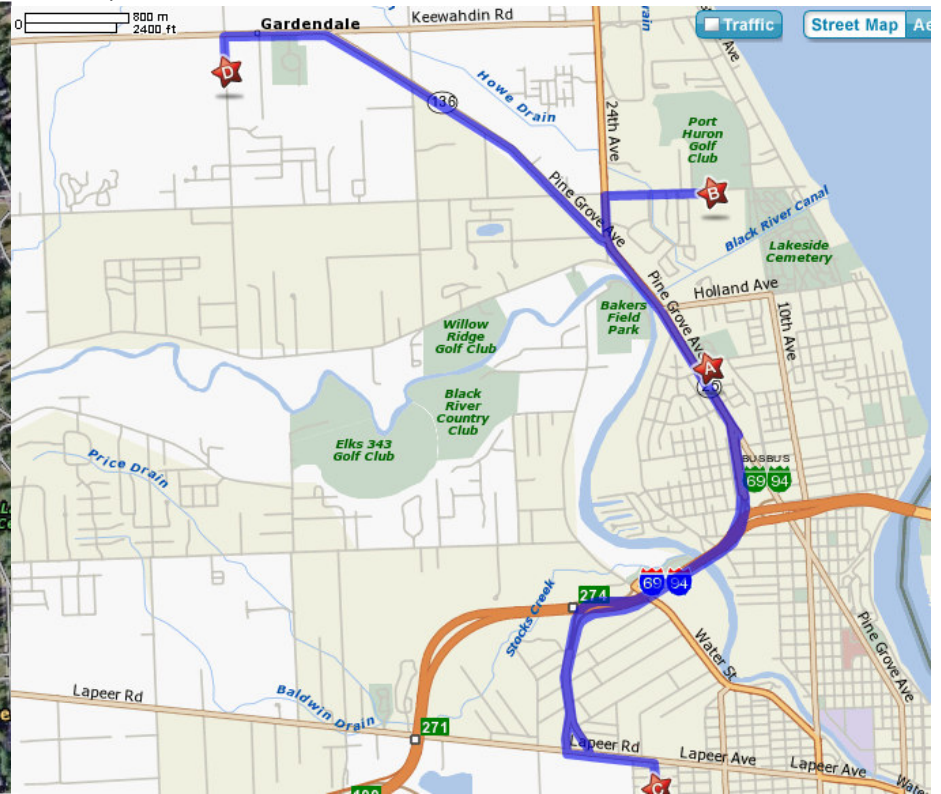
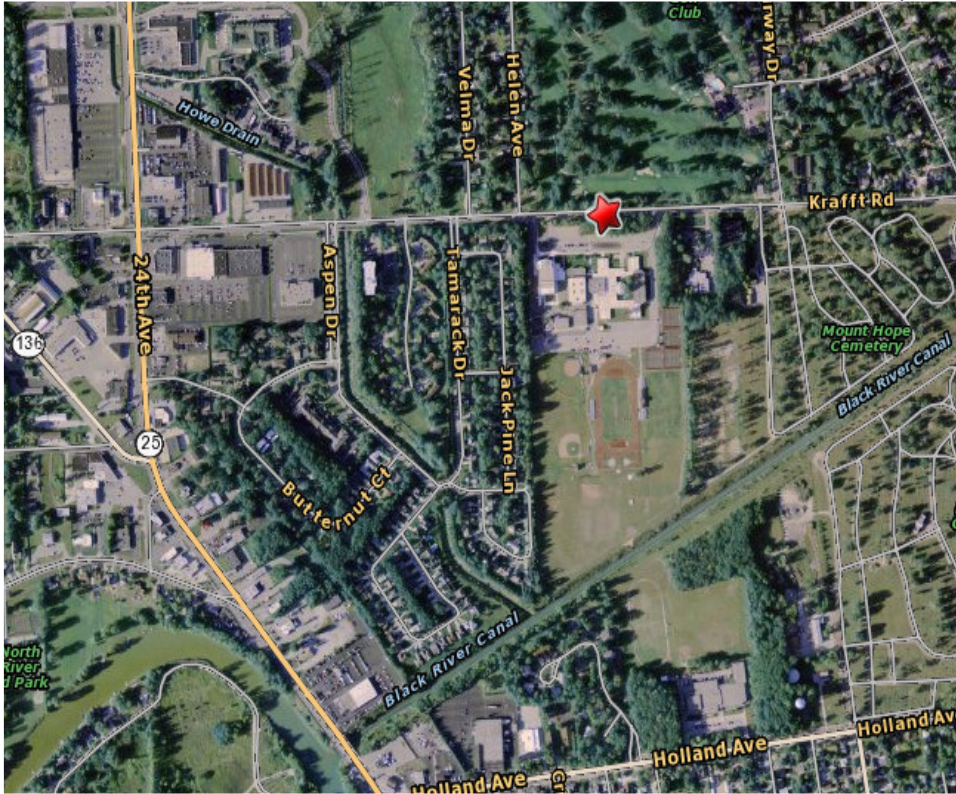


**Field: Port Huron Northern**  
1799 Krafft Road, Port Huron, MI 48060



**To: Sanborn Park – 1.8 Estimated Miles - Estimated Time: 4 minutes**

- [1] Start out going WEST on KRAFFT RD toward HELEN AVE (.6 Mile)
- [2] Turn LEFT onto 24TH AVE/ MI-25/ LYNBURNER RD. Continue to follow MI-25 (1.2 Miles)
- [3] Turn LEFT onto SANBORN ST (.1 Miles)
- [4] 1919 SANBORN ST is on the LEFT

**To: Port Huron High School – 5.17 Estimated Miles - Estimated Time: 10 minutes**

- [1] Start out going WEST on KRAFFT RD toward HELEN AVE (.6 Miles)
- [2] Turn LEFT onto 24TH AVE/ MI-25/ LYNBURNER RD. Continue to follow MI-25 (1.5 Miles)
- [3] Take the I-69 W/ I-94 W ramp (.4 Miles)
- [4] Merge onto I-69 W/ I-94 W (.6 Miles)
- [5] Take the WATER ST exit, EXIT 274, toward LAPEER AVE (.1 Miles)
- [6] Take the LAPEER AVE ramp (.4 Miles)
- [7] Turn SLIGHT LEFT to take the LAPEER AVE ramp (.9 Miles)
- [8] Turn LEFT onto LAPEER RD (.4 Miles)
- [9] LAPEER RD becomes LAPEER AVE - Turn RIGHT onto 24TH (.2 Miles)
- [10] Turn LEFT onto Farley ST (.1 Miles)

**To: Fort Gratiot – 3.14 Estimated Miles - Estimated Time: 5 minutes**

- [1] Start out going WEST on KRAFFT RD toward HELEN AVE (.8 Mile)
- [2] Turn RIGHT onto PINE GROVE AVE/ MI-136. Continue to follow MI-136 (2.1 Miles)
- [3] Turn LEFT onto STATE RD (.2 Miles)
- [4] 4392 STATE RD is on the LEFT