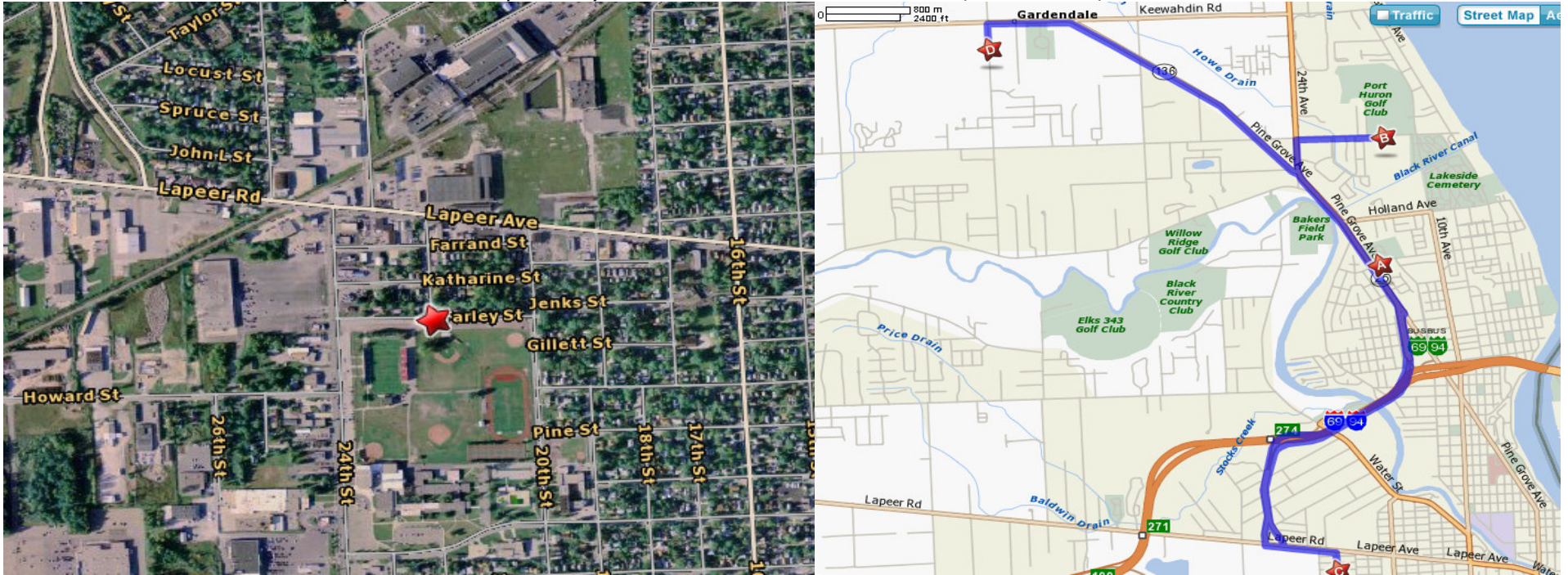


## Field: Port Huron High School

(22<sup>nd</sup> and Farley Street) – PHH School 2215 Court Street, Port Huron, MI 48060



**To: Sanborn Park – 3.47 Estimated Miles - Estimated Time: 6 minutes**

[1] Start out going EAST on FARLEY ST toward 24TH (.1 Miles) [2] Turn RIGHT onto 24TH (.1) [3] Turn LEFT onto LAPEER AVE - LAPEER AVE becomes LAPEER RD (.2 Miles) [4] Take the I-94/ I-69 ramp toward CANADA/ BRIDGE TO CANADA (.6 Miles) [5] Merge onto I-69 E/ I-94 E (1.2 Miles) [6] Take the exit on the LEFT toward M-25/ PINE GROVE AVE/ LEXINGTON (.6 Miles) [7] Turn LEFT onto PINE GROVE AVE/ MI-25 (.4 Miles) [8] Turn RIGHT onto SANBORN ST (.1 Miles) [9] 1919 SANBORN ST is on the LEFT

**To: Port Huron Northern School – 5.07 Estimated Miles - Estimated Time: 10 minutes**

[1] Start out going EAST on FARLEY ST toward 24TH (.1 Miles) [2] Turn RIGHT onto 24TH (.1) [3] Turn LEFT onto LAPEER AVE - LAPEER AVE becomes LAPEER RD (.2 Miles) [4] Take the I-94/ I-69 ramp toward CANADA/ BRIDGE TO CANADA (.6 Miles) [5] Merge onto I-69 E/ I-94 E (1.2 Miles) [6] Take the exit on the LEFT toward M-25/ PINE GROVE AVE/ LEXINGTON (.6 Miles) [7] Turn LEFT onto PINE GROVE AVE/ MI-25. Continue to follow MI-25 (1.6 Miles) [8] Turn RIGHT onto KRAFFT RD. (.6 Miles) [9] 1799 KRAFFT RD is on the RIGHT

**To: Fort Gratiot – 6.93 Estimated Miles - Estimated Time: 12 minutes**

[1] Start out going EAST on FARLEY ST toward 24TH (.1 Miles) [2] Turn RIGHT onto 24TH (.1) [3] Turn LEFT onto LAPEER AVE - LAPEER AVE becomes LAPEER RD (.2 Miles) [4] Take the I-94/ I-69 ramp toward CANADA/ BRIDGE TO CANADA (.6 Miles) [5] Merge onto I-69 E/ I-94 E (1.2 Miles) [6] Take the exit on the LEFT toward M-25/ PINE GROVE AVE/ LEXINGTON (.6 Miles) [7] Turn LEFT onto PINE GROVE AVE/ MI-25. (1.3 Miles) [8] Turn LEFT onto PINE GROVE AVE/ MI-136. Continue to follow MI-136 (2.5 Miles) [9] Turn LEFT onto STATE RD (.2 Miles) [9] 4392 STATE RD is on the LEFT